

Get Involved

Would you like to be a Foster Parent or a Parent Mentor? Would you like to mentor a teen or read to a young child? Are you looking for a hands-on, community service project for your membership or religious organization? If so, we have several opportunities for you to volunteer and make a difference! Please send inquiries to: info@csrox.org.

Why Give to Children's Services of Roxbury?

CSR relies on the generosity of people who understand that helping children and families at risk is an investment in the future. We accept and appreciate monetary contributions and donations in-kind such as:

- gently used clothing
- toys
- small furniture
- housewares
- non perishable foods
- toiletries
- sheets and blankets

Please call: 617-989-9601 or visit our website and make tax deductible donation today!



Headquarters

520 Dudley Street
Roxbury, MA 02119
617-445-6655 Fax: 617-541-5861
Offering all Programs and Services

Tewksbury Office

1147 Main Street, Suite 209-210
Tewksbury, MA 01876
978-640-0089 Fax: 978-640-9652
Offering Comprehensive Foster Care

Worcester Office

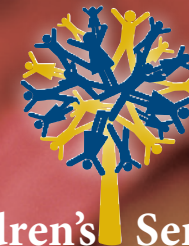
90 Madison Street, Suite 402
Worcester, MA 01608
508-751-4161 Fax: 508-751-4163
Offering Family Based Early Education and Care

Northampton Office

90 Conz Street
Northampton, MA 01060
413-586-2303 Fax: 413-586-2304
Offering Comprehensive Foster Care and Youth Permanency Connections



Visit us at: www.csrox.org
Send inquiries to: info@csrox.org



Children's Services of Roxbury
Strengthening Families across Massachusetts

Roxbury • Tewksbury • Worcester • Northampton

Who We Are

Children's Services of Roxbury (CSR) is regarded as one of the largest, minority-operated, human services provider in Massachusetts, serving more than 6,000 people annually.

Our Mission

CSR's mission strives to provide high quality services to economically disadvantaged children, youth, families, and individuals thereby promoting and strengthening family life and individual growth.

Core Values

We serve with *humility* and treat those we serve with *dignity* and *respect*. We act with *compassion* and *patience*, empathizing without judgment. We operate with *integrity*, knowing that the families we serve need us to be true to our word and we strive for *excellence* in everything we do.



CSR offers 20 Programs & Services

Early Education and Care

- Center Based Childcare from 8 wks to 6 yrs old
- Family Based Childcare from 8 wks to 6 yrs old
- Case Management for Teen Parents and Homeless Families

Behavioral Health Services

- Community Service Agency
Providing Intensive Care Coordinators and Family Partners
- In-Home Therapy
- Therapeutic Mentoring Program
- Outpatient Mental Health Clinic
Providing Recovery Support, Community Support, and School Based Services

Youth & Family Support Services

- Adoption Assessments
- Permanency Mediation
- Comprehensive Foster Care
- Family Stabilization and Support
- Parent Mentoring
- Family Visitation
- Youth Permanency Connections
- Youth and Police in Partnership Program

Housing Services for Individuals and Families

Emergency Housing for Families

- Congregate and Co-Sheltering Program
- Scattered Sites Program

Permanent Housing for Families

- Stabilization Program

Transitional Housing for Individuals in Recovery

- Second Home Program

Permanent Housing for Individuals

- Cornerstone Program (single room occupancy for men and women)

History & Timeline

Children's Services of Roxbury, Inc. is a community-based, nonprofit organization that began in 1968 when Roxbury Children's Services was established through the Boston Children's Services Association (Boston's oldest child welfare agency) and the Church Home Society in order to effectively handle the growing number of black children in need of foster homes and adoption.

- **1972** - United Homes For Children (UHFC) began as a network of foster homes located north and south of Boston.
- **1974** - Roxbury Children's Services became incorporated and independently operated.
- **1975 - 1989** - Roxbury Children's Services and United Homes For Children continued to thrive and serve hundreds of children and families in both urban and suburban neighborhoods.
- **1990** - Roxbury Children's Services re-organized under its new name, Children's Services of Roxbury (CSR)
- **2005** - CSR merged with United Homes For Children.
- **Present** - CSR employs more than 400 employees throughout offices located in Roxbury, Tewksbury, Worcester and Northampton.

"CSR's unique approach to providing services to children and their families are what we believe are effective evidence-based practices that can be modeled and implemented successfully and sets Children's Services of Roxbury apart from their peers."

Trauma Program Specialist, Boston Public Schools